

ThingPark IoT Solutions



Smart level monitoring

The turnkey IoT solution for Smart Level Monitoring and Management Solution.

Multiple industries are already using the level monitoring solution and acknowledge IoT technology for better growth. Beverage, dairy, petroleum, water, and pharmaceuticals are a few sectors that are tremendously following this approach.

Activity level monitoring solution, enables better and more accurate results along with collective data storage for easy access from anywhere. It works to reduce the workload and operation costs, which further leads to an increasing business profit.

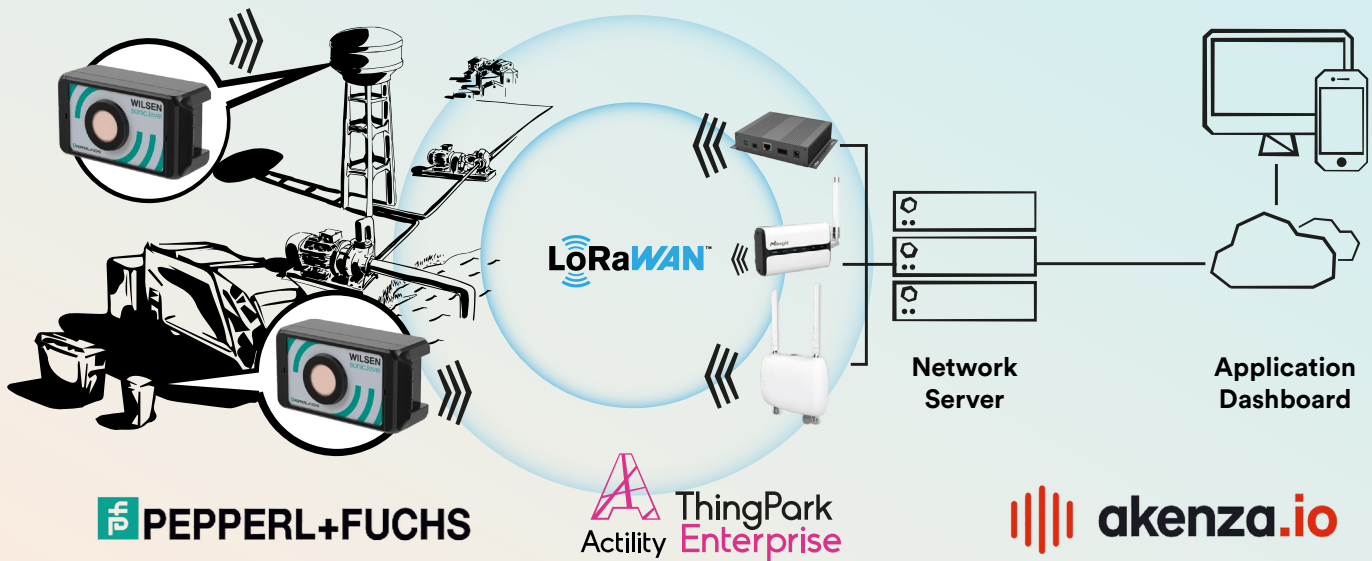
 **PEPPERL+FUCHS**

 **akenza.io**



Activity

IoT Powered Level Monitoring Solution



pf PEPPERL+FUCHS

Activity ThingPark
Enterprise

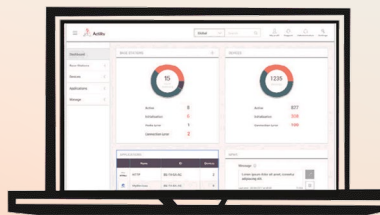
akenza.io

WILSEN.sonic.level
UCC2500 & UCC4000
Sensor by Pepperl+Fuchs



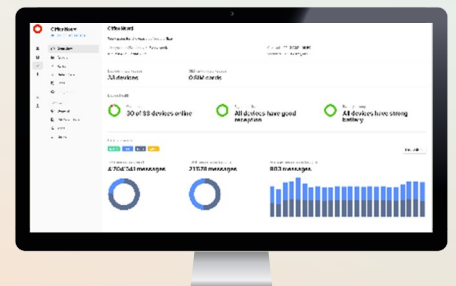
The WILSEN.sonic.level battery-operated and wireless, IoT ultrasonic sensor from Pepperl+Fuchs has been developed according to industrial requirements. It records the fill level and ge positioning the assets, like containers, in which it is installed, and transmits this data securely to user dashboards for the use of industrial experts.

ThingPark Enterprise
LoRaWAN® connectivity
infrastructure by Activity



Dependable connectivity infrastructure with a proficient UX to easily build a LoRaWAN® network, Cloud-based or On-Premises, using pre-integrated high-end Base Stations & an advanced Activity Network Server with dashboards providing key operational insights on the network & alarm management.

akenza.io
A Horizontal IoT Platform



akenza.io is a self-service IoT platform that allows you to build great IoT products and services with value. It connects, controls, and manages IoT devices, all in one place. With simple and secure management of smart devices, connectivity, and data, the akenza.io IoT application enables the rapid introduction of innovative, smart solutions.



Industry environment experts are worried about challenging environmental and natural disasters such as rivers and lakes overflowing their banks and flood basin levels, as they do manual observations instead of using technologically stress-free environments.



Waste Management executives are frustrated when it comes to relying on the non-interconnected waste management system. Managing waste management crews is a challenging job. They need a remote monitoring system so that the containers are only collected once filled to a set amount.



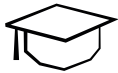
Logistics experts are annoyed as they cannot share tanks or silos fill levels data in an automatic manner with their suppliers, because they don't have the data on their existing supply logistics system, and it is not tailored to their needs.



Key features:



Actionable Dashboard with Instant Alerts: Real-time monitoring, measuring, recording, and alerting on distance, ge positioning and temperature readings, with meaningful insights to make data-driven decisions.



Expertise from a Market Leader: Pepperl+Fuchs is a market leader in the field of industrial ultrasonic sensors. The device has a rugged housing with IP66/67 protection and can also be used outdoors at temperatures of -25 °C ... +70 °C.



Low-Power and long-range: Wireless LoRaWAN® battery-based sensors with long-range technology, allow easy and fast installation in very large, monitored areas.



Easy usage: Available as on-premises & cloud-based applications. Manage your installation from one single application dashboard with easy accessibility, usability, management & control.



Mobile Device App: The WILSEN.sonic.level eliminates the need to laboriously adjust individual sensors via push buttons since parameterization can be carried out on a mobile device using an app for Android and iOS via Bluetooth® LE.

Use cases:

This ready-to-use IoT Solution is used to monitor fill levels of rivers, lakes, and flood basins and enables intelligent disposal management, in which the filling levels of used glass, old clothes, and recyclables containers are monitored remotely so that the containers are only collected once filled to a set amount.



Build your IoT Solution with us!

Get your starter kit on ThingPark Market, or contact Actility to learn more

